



SIDE SLIDING SECTIONAL DOORS

NEW. Slategrain surface finish with slate structure in 15 preferred colours and RAL to choose

HÖRMANN





4

Good reasons
to try Hörmann
sectional doors.



12

Inspirations.



18

Design.
Equipment.
Accessories.

Responsibility for generations

The Hörmann family business has over 85 years of experience as a construction component specialist. This gives us an obligation to past, current and future generations. That's why environmental responsibility plays such an important role for us. With this in mind, we develop innovative solutions for sustainable products and intelligent environmental protection.



“A GOOD REPUTATION MUST BE EARNED.”

August Hörmann

In keeping with the tradition started by the company's founder, the Hörmann brand is a true promise of quality and, with sales of over 20 million doors and operators, is one of Europe's most successful suppliers. Due to the comprehensive international sales and service network, Hörmann is your strong partner for high-quality construction components.

AN EYE ON THE FUTURE. Hörmann is setting a good example. That's why 100% of our electricity needs in Germany come from green electricity. Together with an intelligent and certified energy management system, CO₂-neutral mailing and the recycling of valuable materials, more than 40000 tonnes of CO₂ are saved each year. In addition, we offset over 100000 tonnes of CO₂ by promoting wind energy and reforestation projects in cooperation with ClimatePartner.



You can find further information at
www.hoermann.de/umwelt



Brand quality made in Germany



The family-owned company Hörmann offers all important construction components for building and renovating projects from a single source. We manufacture in highly specialised factories using state-of-the-art production technologies. Our employees work intensively on new products, continual further developments and improvements to details. The results are patents and unique products on the market.





10-year
warranty*

LONG-LASTING. GUARANTEED. All major door and operator components are developed and manufactured by Hörmann. Endurance tests under real conditions ensure mature series products with Hörmann quality. Thanks to this and uncompromising quality assurance, you receive a 10-year warranty on all Hörmann sectional doors and a 5-year warranty on Hörmann operators*.

* The complete warranty conditions can be found at: www.hormann.co.uk



Tested and
certified

CERTIFIED SAFETY FOR YOU AND YOUR FAMILY.

Hörmann side sliding sectional doors are tested and certified in accordance with the high safety requirements of European standard 13241, not only on their own but also in combination with Hörmann operators. It would be hard to find a safer side sliding sectional door. And this provides you and your family with safety during daily use.



Discover the space you could save

In contrast to up-and-over doors, sectional doors and roller garage doors, side sliding sectional doors open to the side instead of upwards. This is particularly advantageous if, for example, the garage ceiling has to remain free to store items (such as surfboards), or the door leaf cannot be stowed underneath or fitted to the ceiling due to construction reasons (a sloped roof, low lintel, obstructive drainpipes).





RELIABLE. Optimally shaped door section transitions and hinges prevent fingers from being accidentally trapped. The reliable automatic safety cut-out is active during both the opening and the closing cycle of the door. The door stops immediately if there is an obstacle in the opening area or in the wall guide. This prevents injuries and damage to vehicles or property from the outset.



SECURE. When the garage door is closed, the anti-lift kit automatically engages in the boom's stop, then locks immediately and is secured against forced opening. Additionally, two hooks on the side of the door connect the end of the door leaf firmly with the side frame.



Watch the video at
www.hormann.co.uk/videos



LIGHT, QUIET, PRECISE. 42 mm-thick panels with PU foam infill are guided safely and precisely at the top by stable twin rollers and at the bottom in a rounded floor rail. The floor rail is open on both ends, making it easy to clean.

Intelligent operating comfort

Hörmann operators offer more convenience, smart functions and intelligent technology. Our elegant hand transmitters allow you to open your door from your car. Or you can simply use your smartphone as a door opener with the Hörmann BlueSecur app or the Hörmann homee Smart Home system.





Only from Hörmann

CERTIFIED SECURITY. The bidirectional radio system BiSecur with particularly secure encryption protocol and stable, interference-free range makes sure that no one can copy your radio signal. This is also confirmed by the security experts of Bochum University and independent test institutes.



Watch the video “BiSecur – the radio system with certified security” at: www.hormann.co.uk/videos

WICKET DOOR FUNCTION. Side sliding sectional doors can also be opened partially to allow pedestrian passage. This way you can get into your garage faster, for example if you want to get your bicycle out. The pedestrian passage width can be individually set in doors with an operator. For example, to get a narrow passage for persons or a wider passage for bikes, motorcycles or wheelbarrows. The door is operated via the hand transmitter or the optional door handle with radio module.

→ For further information, see from page 28.

A brief actuation of the handle and the door automatically moves into the set position.



With the homee Smart Home system, you can control all door functions via your tablet or smartphone.

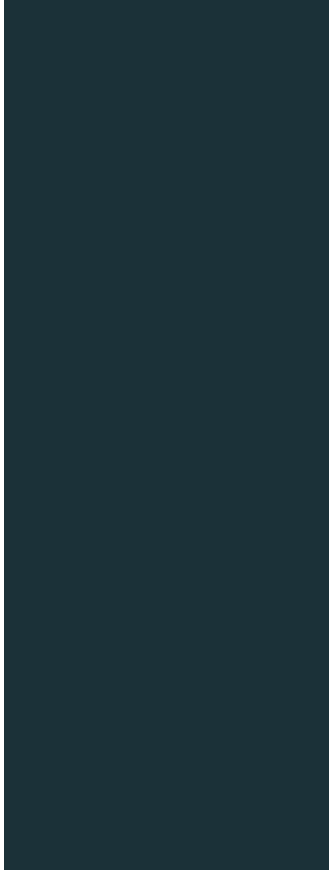




PLANAR SURFACE FINISH. The elegant surface finish in 6 exclusive Matt deluxe Hörmann colours meets all expectations of a modern door design. It impresses by combining a smooth surface finish with fine elegance and matt trendy colours.

→ Available as L-ribbed. For all colours and details, see from page 24.





SILKGRAIN SURFACE FINISH. Thanks to its elegant door appearance, this silky smooth surface finish is the first choice for modern architecture.

→ Available as L- and M-ribbed. For all colours and details, see from page 22.

TOP LEFT. L-ribbed design style 451 in Silkgrain, Anthracite grey RAL 7016

TOP RIGHT. Detail view of Silkgrain, Anthracite grey RAL 7016

BOTTOM LEFT. L-ribbed Planar, CH 7016 Matt deluxe Anthracite grey

BOTTOM RIGHT. Detail view of Planar, CH 7016 Matt deluxe Anthracite grey





DECOGRAIN SURFACE FINISH. The detailed surface finish is available in five natural-looking timber designs and with an anthracite metallic-effect decor. Your door remains beautiful for a long time thanks to the special surface protection with UV-resistant plastic film coating on the outside of the steel sections.

→ Available as L- and M-ribbed. For all decors and details, see from page 25.



DURAGRAIN SURFACE FINISH. With this smooth door surface, you can choose from 24 detailed, natural and true-colour decors or, if you wish, have your door printed with an individual image. The final coating of high-strength protective paint is especially robust, scratch-resistant and stain-resistant. So your door can retain its flawless appearance for a long time to come.

→ Available as L-ribbed. For all decors and details, see from page 26.



TOP LEFT. Detail view of Decograin Golden Oak

TOP RIGHT. M-ribbed, Decograin Golden Oak

BOTTOM LEFT. Detail view of Duragrain Burned Oak

BOTTOM RIGHT. L-ribbed, Duragrain Burned Oak

SLATEGRAIN SURFACE FINISH ■ NEW. Slate slabs are the model for this new textured surface finish that gives your door a special look. Thanks to the slate structure, minor scratches can be easily repaired.

→ Available as L- and M-ribbed. For all colours and details, see from page 22.

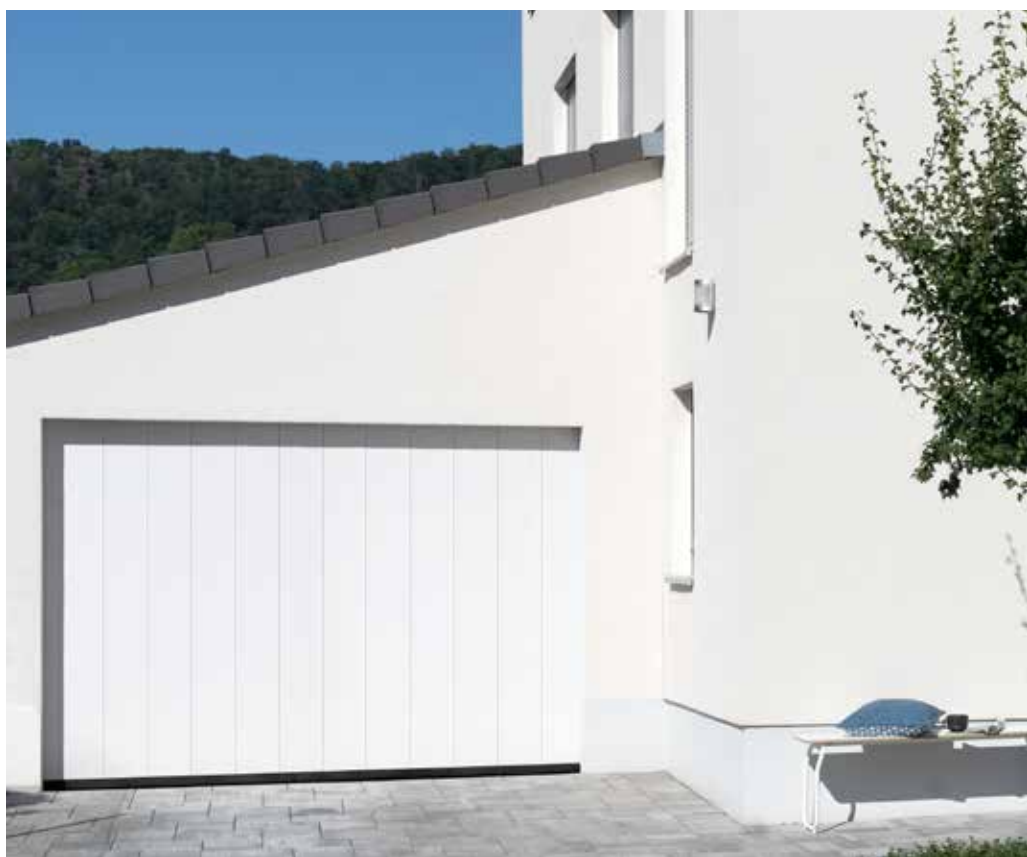


TOP LEFT. Detail view of Slategrain, Traffic white RAL 9016

TOP RIGHT. L-ribbed, Slategrain, Anthracite grey RAL 7016

BOTTOM LEFT. M-ribbed, Woodgrain, Traffic white RAL 9016

BOTTOM RIGHT. Detail view of Woodgrain, Traffic white RAL 9016



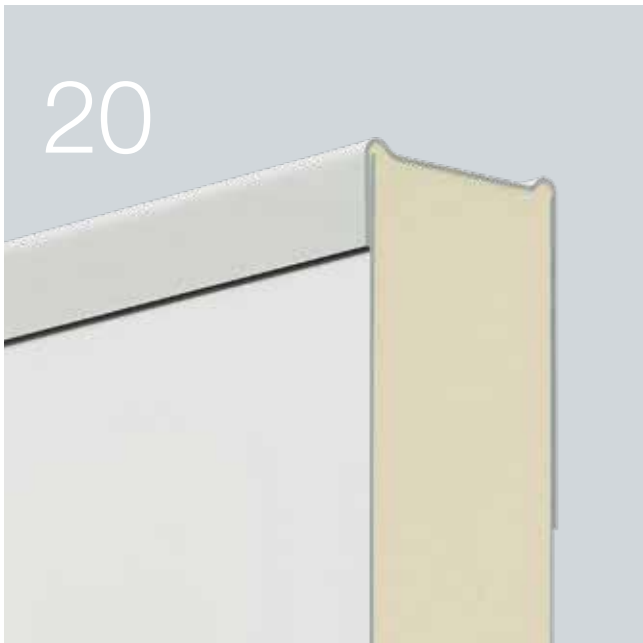


WOODGRAIN SURFACE FINISH. On this inexpensive and robust surface with an authentic sawn timber look, minor scratches can be easily repaired.

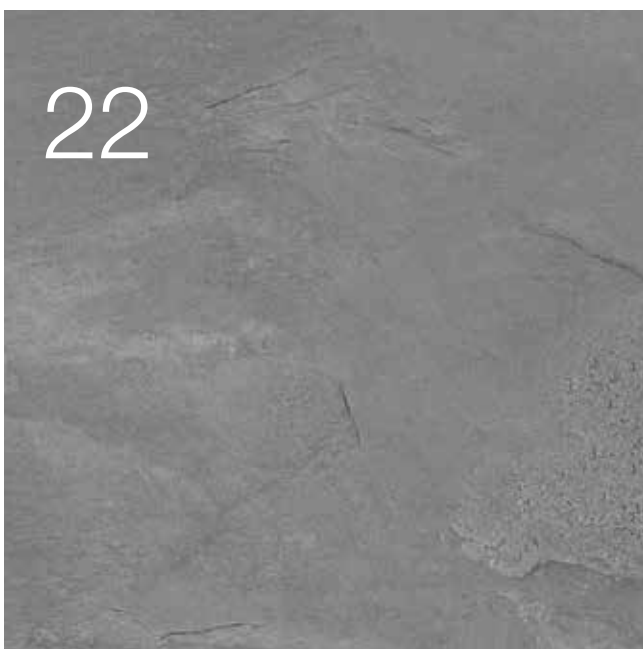
→ Available as L- and M-ribbed. For all colours and details, see from page 22.



20



22



34



Design. Equipment. Accessories.

- 20 Steel sectional doors
- 22 Surface finishes, colours, decors
- 28 Handles
- 29 Glazings and ventilation grilles
- 30 Standard equipment
- 32 Side doors
- 34 Operators
- 36 Accessories
- 38 Dimensions and fitting data

Steel sectional doors

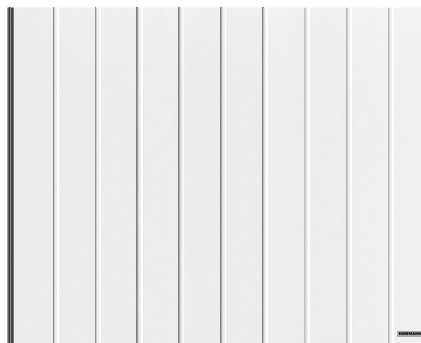
Door leaf version and door styles



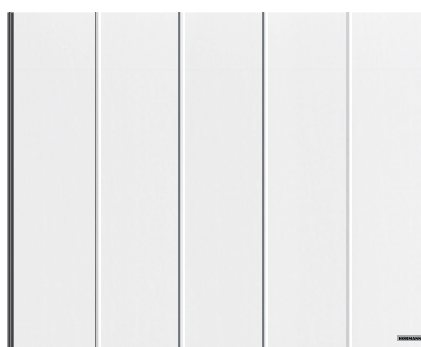
HST 42

- Good insulation and door travel properties
- Double-skinned 42 mm thick sections

Standard styles



M-ribbed, Traffic white RAL 9016



L-ribbed, Traffic white RAL 9016

Performance characteristics according to European standard 13241

Section material	Galvanised sheet steel with polyester primer coating
Section thickness	Double-skinned, 42 mm
Thermal insulation U-value fitted door	1.9 W/(m ² ·K) ¹⁾
Wind load ³⁾	Class 2
Air / water tightness	Class 2 / Class 2 ²⁾
Max. width	6500 mm
Max. height	3000 mm

Styles / surface finishes

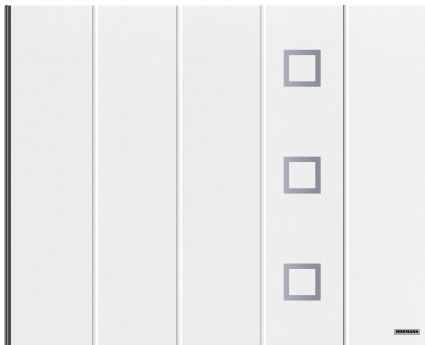
M-ribbed	Woodgrain, Slategrain, Silkgrain, Sandgrain, Decograin
L-ribbed	Woodgrain, Slategrain, Silkgrain, Sandgrain, Planar, Decograin, Duragrain

¹⁾ The U-value applies to fitted doors without glazing with the dimensions 4300 × 3000 mm

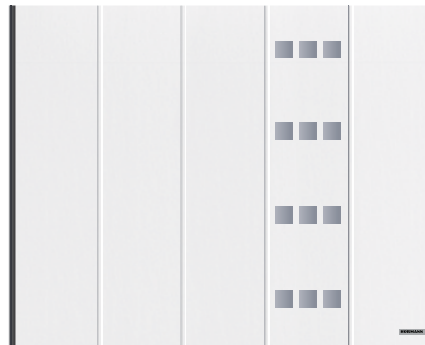
²⁾ Up to 70 Pa water pressure

³⁾ Higher wind load classes on request

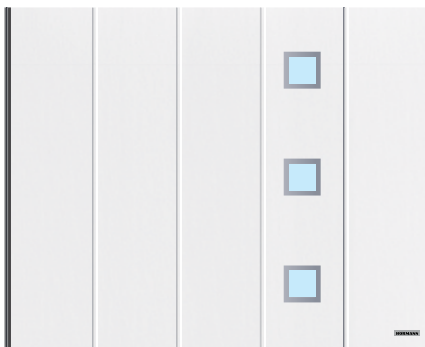
Styles with design elements



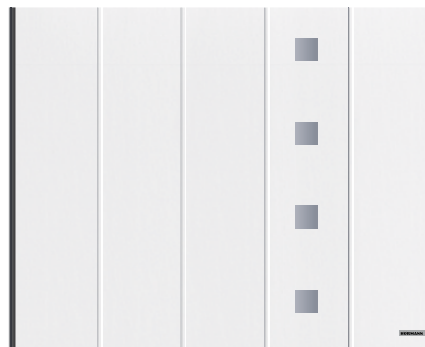
L-ribbed, Traffic white RAL 9016,
design element style 451



L-ribbed, Traffic white RAL 9016,
design element style 456



L-ribbed, Traffic white RAL 9016,
design element style 461 with glazing



L-ribbed, Traffic white RAL 9016,
design element style 460

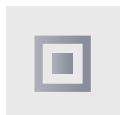
Design elements



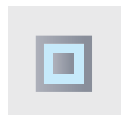
Style 451



Style 461



Style 452



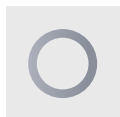
Style 462



Style 471



Style 481



Style 459



Style 469



Style 472



Style 482



Style 473



Style 483



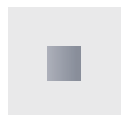
Style 453



Style 463



Style 456



Style 460



Style 454



Style 455

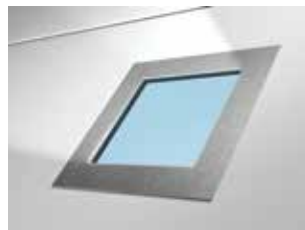


Style 474



Style 475

Glazings



Design element in brushed stainless
steel



Real glass
optional for styles 461
and 481



Design element painted in Anthracite grey
RAL 7016 with synthetic glazing for styles
461, 462, 463, 469, 481, 482 and 483

Surface finishes, colours, decors

Woodgrain, Slategrain, Silkgrain

Woodgrain



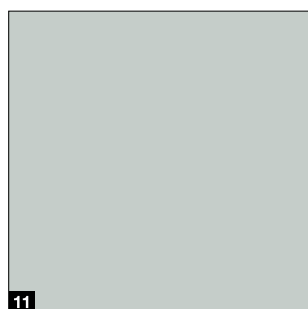
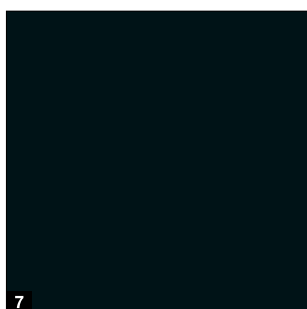
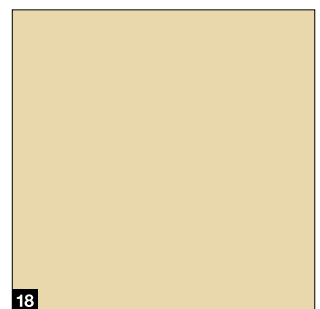
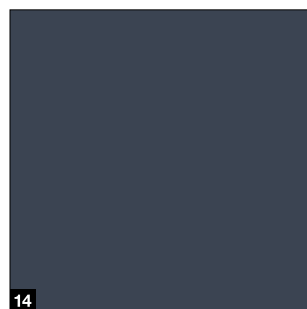
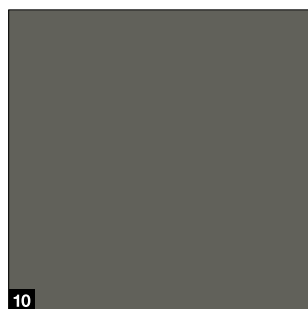
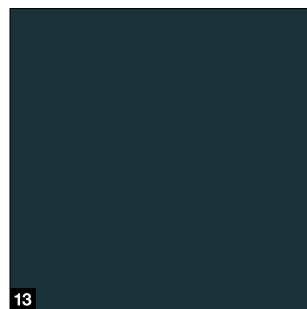
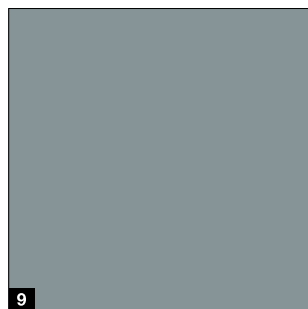
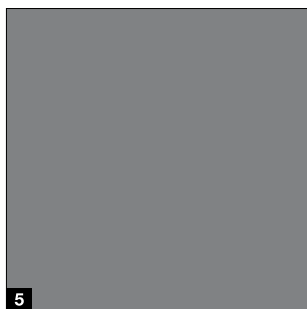
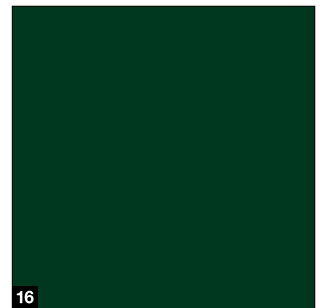
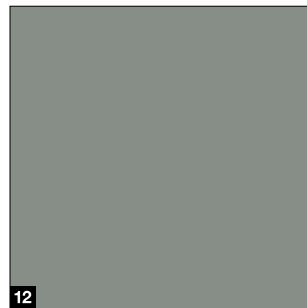
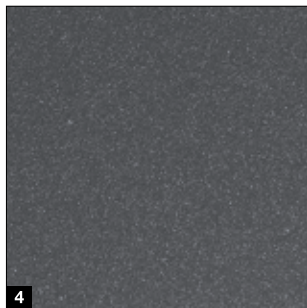
Slategrain ■ NEW



Silkgrain



16 preferred colours



Only from Hörmann

Slategrain surface finish

- 1 **Woodgrain**
RAL 9016 Traffic white
- 2 **Slategrain**
RAL 9016 Traffic white
- 3 **Silkgrain**
RAL 9016 Traffic white

Preferred colours

- 4 CH 703 Anthracite metallic ■ **NEW**
- 5 RAL 9007 Grey aluminium
- 6 RAL 9006 White aluminium
- 7 RAL 9005 Jet black ■ **NEW**
- 8 RAL 8028 Terra brown
- 9 RAL 7040 Window grey
- 10 RAL 7039 Quartz grey ■ **NEW**
- 11 RAL 7035 Light grey
- 12 RAL 7030 Stone grey
- 13 RAL 7016 Anthracite grey
- 14 RAL 7015 Slate grey ■ **NEW**
- 15 RAL 7012 Basalt grey ■ **NEW**
- 16 RAL 6009 Fir green
- 17 RAL 6005 Moss green
- 18 RAL 1015 Light ivory

RAL to choose

The Woodgrain, Silkgrain and Slategrain surface finishes are optionally available in around 200 colours according to RAL* as well as in many NCS and DB colours.

Please note:

Sectional garage doors are generally supplied in Grey white, RAL 9002, on the inside of the door.

Dark colours should not be used for double-skinned steel doors that are exposed to the sun, as possible section deflection may damage the door.

All colours based on RAL.

The colours and surface finishes shown are subject to the limitations of the printing process and cannot be regarded as binding. Please consult with your local Hörmann specialised dealer.

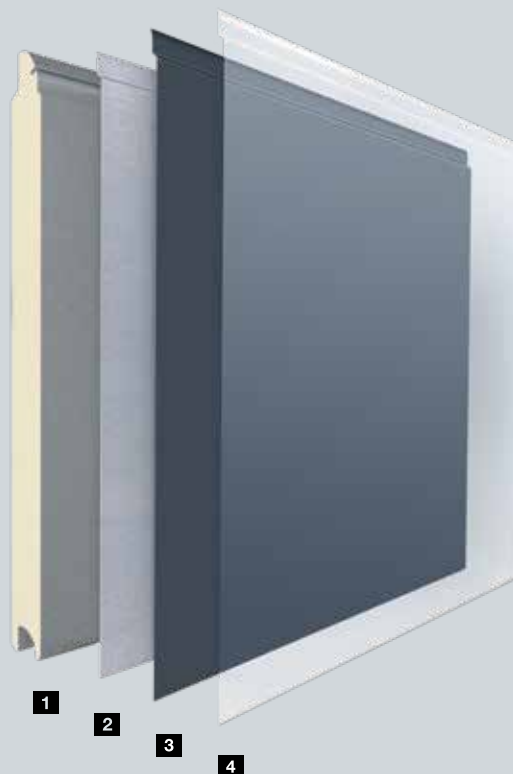
* RAL Classic colours, with the exception of pearl-effect and fluorescent colours

Protective coatings ■ **NEW** for a long, beautiful door appearance

Final coating. The surface finish of the sections is especially robust, scratch-resistant and stain-resistant thanks to the protective paint.

Final coating "Anti-Graffiti". Due to the protective paint on the surface of the section as well as on glazings, design elements, etc., graffiti can be removed with a commercially available special cleaner.

→ Available for the Woodgrain, Slategrain and Silkgrain surface finishes.

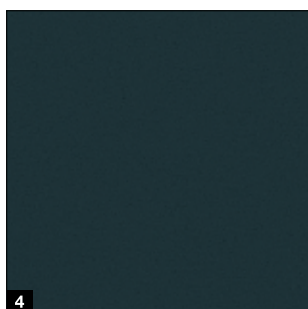


- 1 Double-skinned section
- 2 Galvanisation
- 3 Polyester primer coating
- 4 Final coating or final coating "Anti-Graffiti"

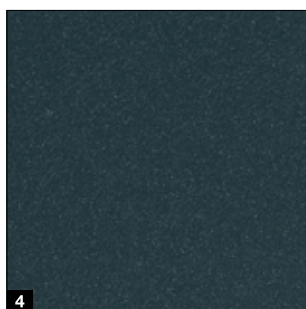
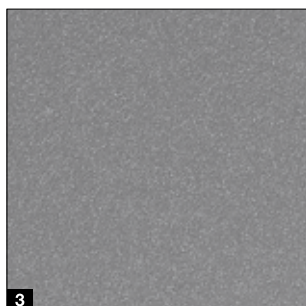
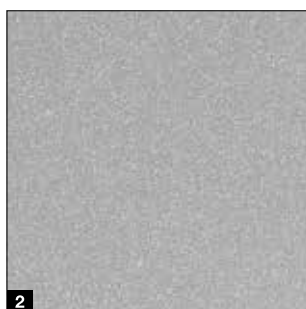
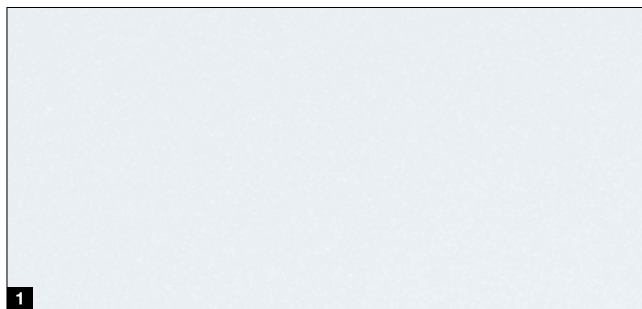
Surface finishes, colours, decors

Sandgrain, Planar, Decograin

Sandgrain



Planar



Standard colour

1 RAL 9016 Traffic white

Preferred colours

2 RAL 9006 White aluminium

3 RAL 8028 Terra brown

4 RAL 7016 Anthracite grey

Standard colour

1 CH 9016 Matt deluxe Traffic white

Preferred colours

2 CH 9006 Matt deluxe White aluminium

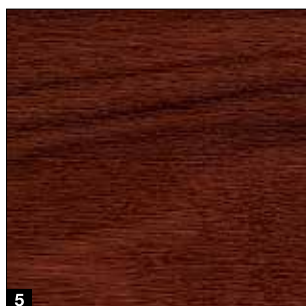
3 CH 9007 Matt deluxe Grey aluminium

4 CH 7016 Matt deluxe Anthracite grey

5 CH 8028 Matt deluxe Terra brown

6 CH 703 Matt deluxe Anthracite metallic


Decograin



Decograin decors

- 1 Titan Metallic CH 703: anthracite with a metallic effect
- 2 Golden Oak: medium brown, golden yellow oak decor
- 3 Dark Oak: walnut-coloured oak decor
- 4 Night Oak: dark, intense oak decor*
- 5 Rosewood: mahogany-coloured timber decor*
- 6 Winchester Oak: natural-coloured knotty oak decor*

* Not for LPU 67 Thermo



Only from Hörmann

Door leaf, fascia panel and side frames matching in Woodgrain Traffic white RAL 9016

A B

Matching appearance of frames and door leaves

The harmonious appearance of a door is the result of many small details: The fascia panel **A** is always provided matching* the door sections. This ensures that everything fits together. The side frames **B** are available with a white Woodgrain surface finish as standard. With frame coverings, the side frames can be easily adapted to the surface finish of the sections.

* For the Slategrain surface finish with smooth surface, for the Duragrain surface finish in a colour matching the door section or in RAL to choose

Surface finishes, colours, decors

Duragrain

Duragrain



Duragrain
Extremely scratch-resistant

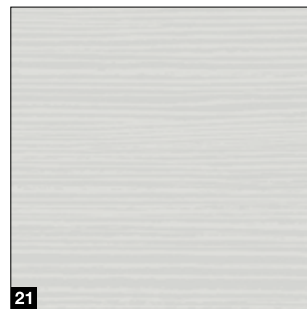
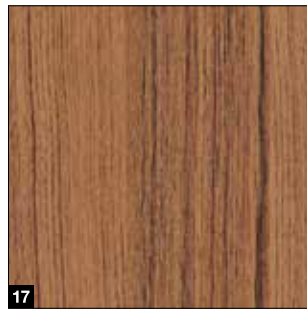
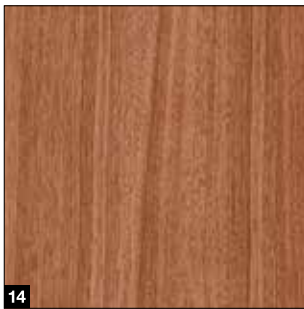
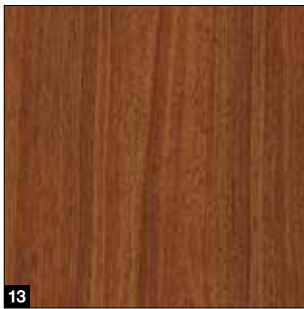
Scratch-resistant and stain-resistant

The innovative digital printing process in combination with the final coating of high-strength protective paint is only available from Hörmann. This is the basis for a permanently beautiful door appearance.

For Duragrain doors, we optionally supply the frame covering and the panels in a colour that matches the decor.

- 1 Double-skinned section
- 2 Galvanisation
- 3 Priming
- 4 Innovative digital print
- 5 Final coating with high-strength protective paint





- | | |
|-----------------------|-----------------------------------|
| 1 Concrete | 13 Noce sorrento balsamico |
| 2 Beige | 14 Noce sorrento natur |
| 3 Moca | 15 Sapeli |
| 4 Grigio | 16 Sheffield |
| 5 Grigio scuro | 17 Teak |
| 6 Rusty Steel | 18 Used Look |
| 7 Bamboo | 19 Terra Walnut |
| 8 Burned Oak | 20 Colonial Walnut |
| 9 Cherry | 21 White brushed |
| 10 Nature Oak | 22 White Oak |
| 11 Pine | 23 Whiteoiled Oak |
| 12 Rusty Oak | 24 Whitewashed Oak |

Please note:

Duragrain doors are generally supplied in Grey white, RAL 9002, on the inside of the door. When the door is opened, a thin Grey white stripe can be seen between the sections on the outside.

Side frames and fascia panels are delivered in Woodgrain, Traffic white RAL 9016, as standard. Optionally, you can obtain lintel and frame fascias in a colour matching the decor or in RAL to choose.

Handles

For internal and external operation

Handles



1



2



3



4



5



6

Manually operated doors are supplied as standard with a handle in White aluminium. 3 other colours are optionally available.

The same versions are also available for doors with automatic operator with automatic wicket door function.

Handles

- 1 White aluminium RAL 9006
- 2 Traffic white RAL 9016
- 3 Brown
- 4 Brushed stainless steel

Door handle position

- 5 Standard version
- 6 Intermediate-width version

Integrated lockable handle with full radio internal push button functions

Two buttons and a sliding switch on the interior side of the handle allow you to:

- 1 Completely open and close the door
- 2 Operate the wicket door function
- 3 Switch off the radio signal (away setting)



Glazings and ventilation grilles

For more light and better ventilation

Glazing variations



The glazings for the top door area are available with a synthetic double pane, either clear or crystal structure. The frames are white as standard and can optionally be delivered in the colour of the door or in RAL to choose.

Glazing

- 1 Glazing S0
- 2 Glazing S1
- 3 Glazing S2

Ventilation grilles



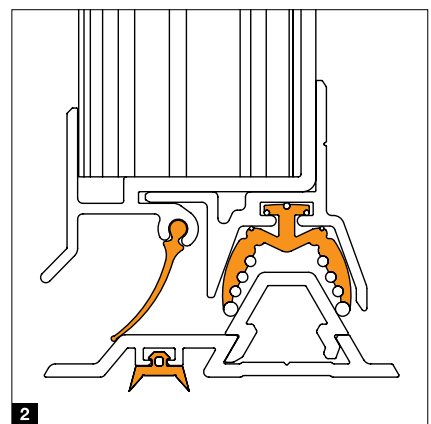
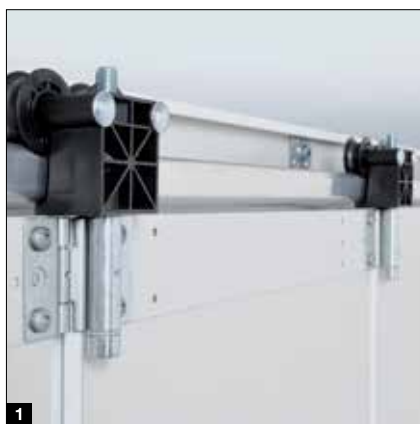
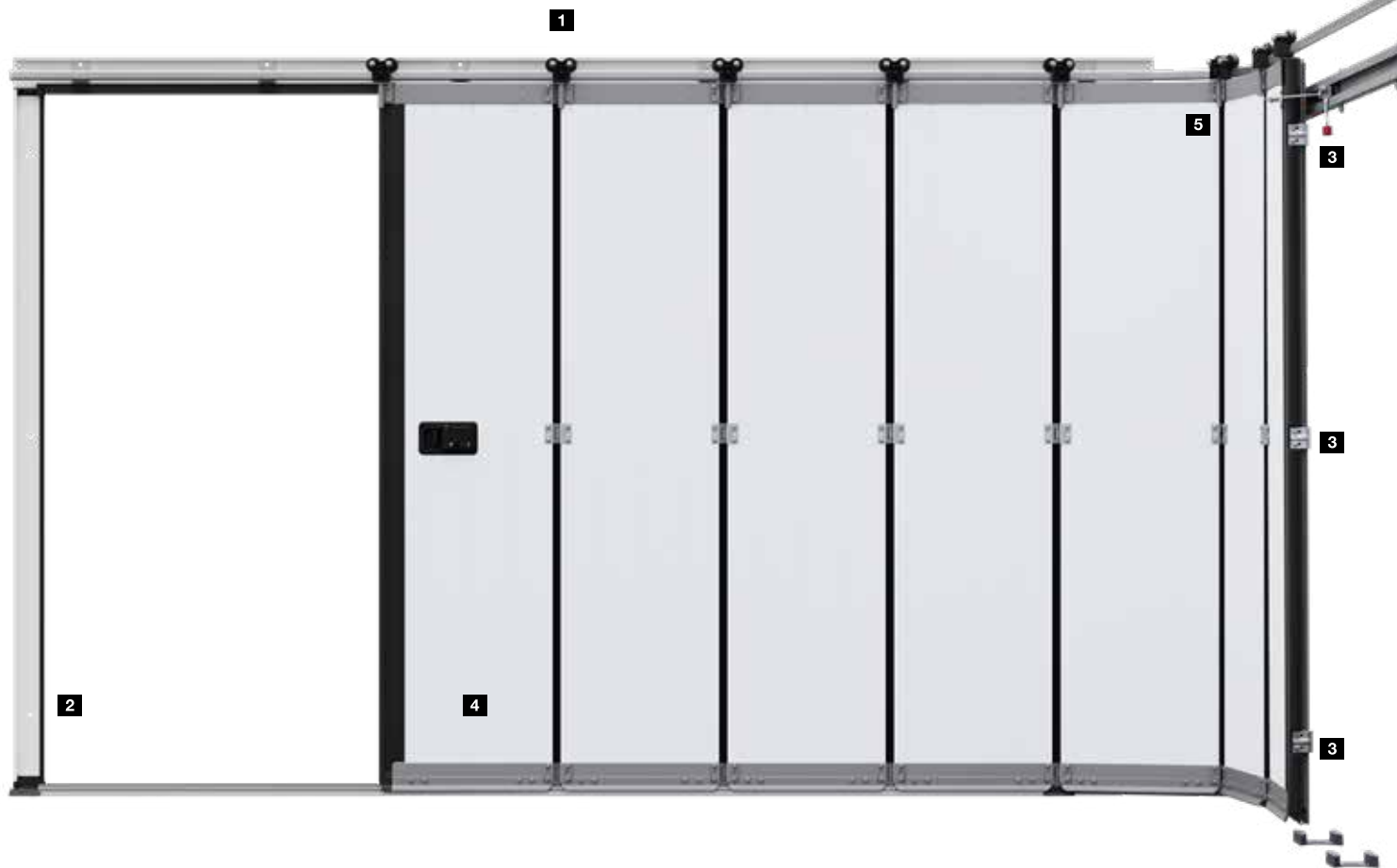
The ventilation grilles in the bottom part of the door are available in black as standard, and optionally in the colour of the door or in RAL to choose.

Ventilation grilles

- 4 Ventilation cross section 40 cm²/grille

Standard equipment

For a secure and long-lasting door function





Precise door travel

Twin rollers **1** made of wear-resistant plastic move reliably and precisely on the aluminium rail and prevent the door sections from jumping out. Additionally, they ensure smooth and quiet door travel, making it easy to manually open the door. Stable connecting hinges on the rollers and between the sections ensure high door leaf stability.

Well-sealed

Thanks to the floor rail with continuous bottom seal **2** the side sliding sectional door impresses with class 2 water tightness and air permeability.

This makes the door well-sealed against penetrating rainwater and leaves. This keeps the garage cleaner for longer which means it must be cleaned less often. In addition, the risk of accidents by slipping is reduced.

Securely locked

The bottom and top door guides close the door precisely. Two additional hooks **3** on the sides of the door connect the end of the door leaf tightly to the side frame. In addition, this mechanical lock prevents the door from being forced open. To improve break-in resistance, manually operated doors can be optionally equipped with 3-point locking at the closing edge.

Well-guided

The bottom aluminium floor rail **4** reliably guides the door sections and prevents the sections from swivelling out. The flat design allows barrier-free access.

Easy fitting

The frame of the side sliding sectional door can be easily screwed together and can subsequently be fastened completely to the garage wall. Fitting in tight spaces with a sideroom of only 140 to 450 mm is made possible with track application DS **5** with double side guides. The side track can be easily fitted with the new adjustable wall brackets.



Side doors

Garage side doors NT60

Door sizes*

- Width (single-leaf) 990 – 1115 mm
- Width (double-leaf) 1130 – 3000 mm
- Height (single- / double-leaf) 1990 – 2183 mm

Leaf frame

- Wide version (profile type 2)

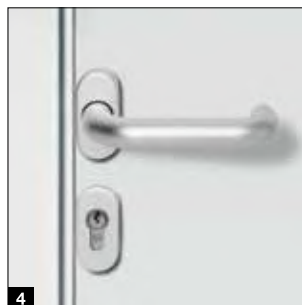
Standard equipment

- 60 mm thick weather-resistant aluminium profiles in the colour of the sections or, with Duragrain infills, in a colour that matches the decor **1**
- Traffic leaf with black plastic lever handle set with oval rose escutcheons and profile cylinder lock **2**
- 3-way adjustable hinges optionally in black, white or aluminium natural finish **3**

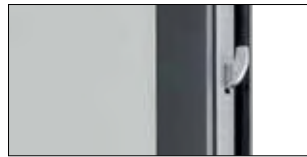


Optional equipment

- Lever handle or lever / knob handle sets in aluminium natural finish **4**, cast aluminium RAL 9016 **5**, brown cast aluminium **6**, brushed stainless steel **7**
- Concealed hinges for an elegant door view in the version with aluminium block frame **8**
- Fixed bolt for locking the fixed leaf with double-leaf side doors **9**
- Break-in-resistant RC 2 security equipment with 3-point-locking (latch, bolt, 2 locking hooks) and security rose escutcheon **10**
- Double-leaf side doors with asymmetrical division (not shown)



* depending on leaf frame version



Multi-purpose door MZ Thermo65

Steel side doors with thermal break

- 65 mm thick door leaf with thermal break and PU rigid foam infill
- Aluminium block frame with thermal break and threshold with thermal break
- High thermal insulation with a U-value = 0.82 W/(m²·K)
- Optionally available in an RC 2 version as KSI Thermo46 with 46 mm thick door leaf



For further information, see the "Steel doors" brochure.

Operators

SupraMatic 4

Supra-fast door opening and smart additional functions

- 40% faster opening speed* up to 20 cm/s
- Smart operation with the BlueSecur app
- Convenient garage ventilation
- Additional opening height
- Up to 3 times (SupraMatic E) or 5 times* (SupraMatic P) brighter LED lighting
- Easy-to-use programming thanks to 2 x 7-segment display
- High-quality stainless steel operator cover
- Networked with Smart Home systems via the standard HCP interface
- Low power consumption in standby below 1 watt



BiSecur

As standard with two 4-button hand transmitters HSE 4 BS, textured surface black with chrome caps

Garage door operators	SupraMatic E	SupraMatic P
Bluetooth receiver	Integrated, can be switched on and off	Integrated, can be switched on and off
HCP bus connection	Integrated	Integrated
Cycles per day / hour	25 / 10	50 / 10
Pull and push force	650 N	750 N
Peak force	800 N	1000 N
Max. opening speed	20 cm/s	20 cm/s
Lighting	20 LEDs	30 LED chase light
Max. door width	6000 mm	6500 mm
Max. door surface	13.75 m ²	15 m ²

* in comparison with the ProMatic series 3

Only from Hörmann
European patent

Hörmann BlueSecur



Operation by smartphone using the Hörmann BlueSecur app

Premium quality at an attractive price

- 20% faster opening speed* up to 17 cm/s
- Convenient garage ventilation
- Additional opening height
- Up to 2 times* brighter LED lighting
- Networked with Smart Home systems via the standard HCP interface
- Low power consumption in standby below 1 watt



 **BiSecur**

As standard with two 4-button hand transmitters HSE 4 BS, textured surface black with plastic caps

Garage door operators	ProMatic 4
Bluetooth receiver	Optional (HET-BLE)
HCP bus connection	Integrated
Cycles per day / hour	25 / 10
Pull and push force	600 N
Peak force	750 N
Max. opening speed	17 cm/s
Lighting	10 LEDs
Max. door width	5000 mm
Max. door surface	11.25 m ²

Accessories

Hand transmitter



HS 5 BS
4 button functions, plus query button, high-gloss surface black or white



HS 5 BS
4 button functions, plus query button, textured surface matt black



HS 4 BS
4 button functions, textured surface matt black



HS 1 BS
1 button function, textured surface matt black



HSE 1 BS
1 button function, including eyelet for key ring, textured surface matt black



HSE 4 BS
4 button functions, incl. eyelet for key ring, textured surface matt black with chrome or plastic caps



HSE 4 BS
4 button functions, incl. eyelet for key ring, high-gloss surface with chrome caps, colours (shown from left): Anthracite grey, Frozen Grey, Classic Grey, Carbon, Silver ■ **NEW**



HSD 2-C BS
High-gloss chrome, 2 button functions, can also be used as a key ring



HSZ 1 BS
1 button function, for insertion in vehicle cigarette lighter



Hand transmitter station
In high-gloss surface black or white, textured surface matt black, for HS 5 BS, HS 4 BS, HS 1 BS



Hand transmitter holder
For wall fitting or fastening to the sun visor of a car, transparent, for HS 5 BS, HS 4 BS, HS 1 BS as well as HSE 1 BS and HSE 4 BS



The complete range of accessories can be found in the "Garage door and entrance gate operators" brochure.



**Radio code switch
FCT 3 BS**
3 functions, with illuminated buttons, recessed or surface-mounted fitting possible, plastic housing in Light grey RAL 7040 (also available with 10 functions and hinged cover, painted in White aluminium RAL 9006)



**Radio code switch
FCT 10 BS**
10 functions, with illuminated buttons and hinged cover, recessed or surface-mounted fitting possible, plastic housing in White aluminium RAL 9006



**Radio finger-scan
FFL 25 BS**
2 functions and up to 25 fingerprints, with hinged cover, recessed and surface-mounted fitting possible, plastic housing painted in White aluminium RAL 9006



**Radio internal push button
FIT 5 BS**
4 button functions plus query button, plastic housing in Pure white RAL 9010

Switch



**Radio internal push button
FIT 2-1 BS**
2 functions, connection option for max. 2 control elements via cable, e.g. key switch, plastic housing in Pure white RAL 9010



**Internal push button
IT 1b-1**
Large, illuminated button for convenient opening of the door, plastic housing in Pure white RAL 9010



**Transponder key switch
TTR 1000-1**
1 function, 1000 teachable keys, scope of delivery: 1 key and 1 card (more on request), zinc die-cast housing in White aluminium RAL 9006



**Code switch
CTP 3-1**
3 functions, with illuminated lettering and touch-sensitive black surface, zinc die-cast housing in White aluminium RAL 9006



**Code switch
CTV 3-1**
3 functions, particularly robust with metal keypad, zinc die-cast housing in White aluminium RAL 9006 with stainless steel panel



**Finger-scan
FL 150**
2 functions, control via fingerprint, up to 150 savable fingerprints, zinc die-cast housing in White aluminium RAL 9006 with stainless steel panel



Key switch
1 STUP 50
2 STAP 50
Recessed version and surface-mounted version, incl. 3 keys, zinc die-cast housing in White aluminium RAL 9006 with stainless steel panel



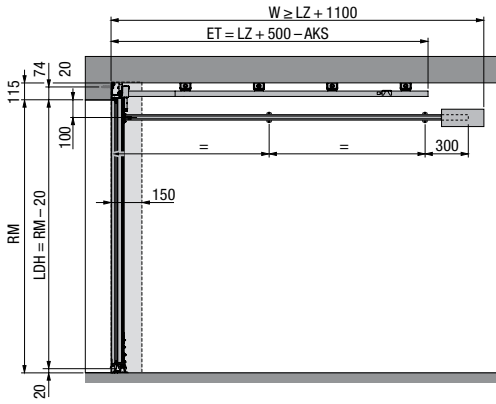
Inside climate sensor HKS I
For monitoring humidity and automatic ventilation of the garage, plastic housing in Pure white RAL 9010

Dimensions and fitting data

HST 42

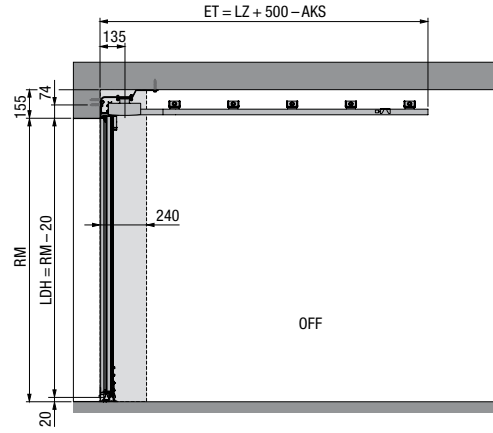
Operator wall fitting

Vertical view



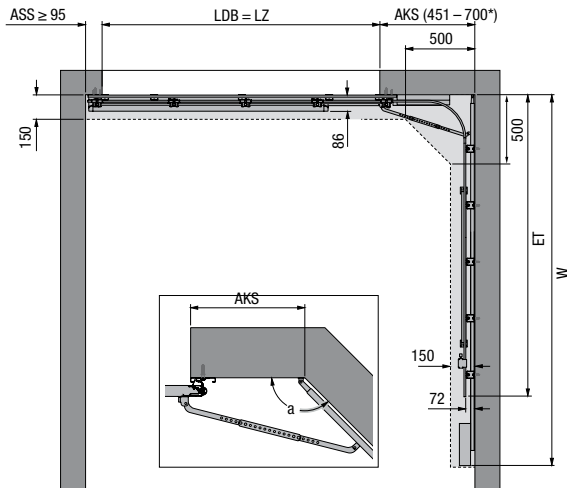
Operator ceiling fitting

Vertical view



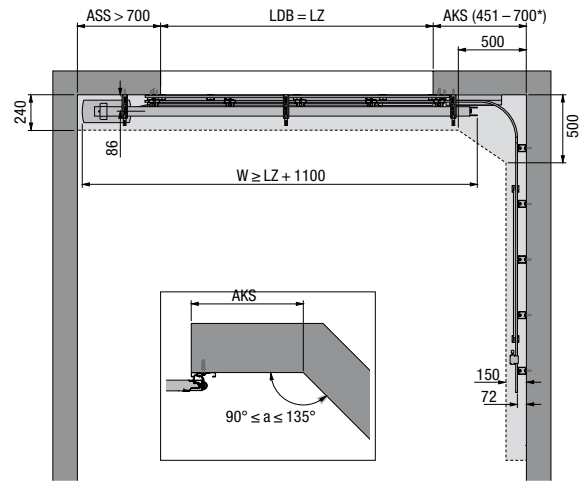
Track application ES (single track, operator wall fitting)

Horizontal view



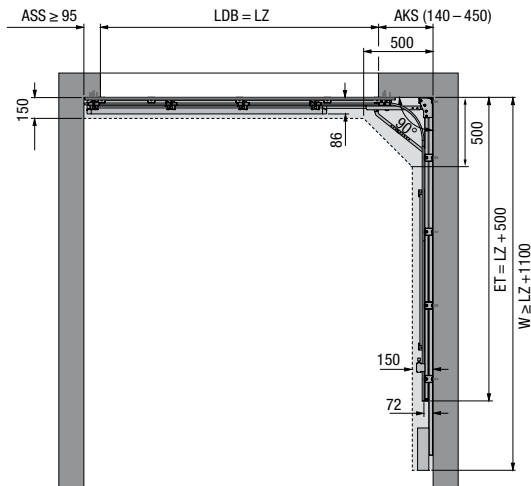
Track application ES (single track, operator ceiling fitting A)

Horizontal view



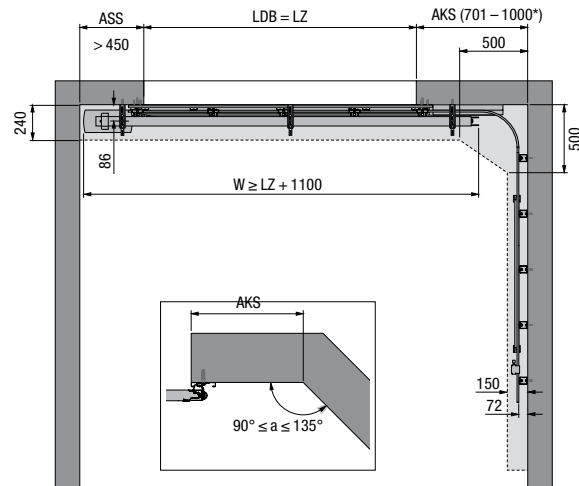
Track application DS (double track, operator wall fitting)

Horizontal view



Track application ES (single track, operator ceiling fitting B)

Horizontal view



Size range (max.)¹⁾

Grid height (RM)	Clear frame dimension (LZ) ²⁾																											
	2000	2080	2125	2205	2250	2375	2500	2625	2750	2875	3000	3125	3275	3500	3750	4000	4250	4500	4750	5000	5250	5500	5700	6000	6300	6500		
3000																												
2875																												
2750																												
2625																												
2500																												
2375																												
2250																												
2205																												
2125																												
2080																												
2000																												
1875																												
	4	4	4	4	4	5	5	5	5	6	6	6	7	7	8	8	8	9	10	10	10	11	12	12	12	13		
	No. of sections																											

¹⁾ Intermediate widths are also available for M-ribbed and L-ribbed doors.

²⁾ Sandgrain, Silkgrain, Decograin surfaces: not available in 2625, 2875, 5250, 6300 widths.

Determining the operator boom

ES and DS track applications

Clear frame dimension (LZ)	Operator boom	Distance back (overall length of operator SupraMatic / ProMatic)
≤ 2205	K	3200
≤ 2375	M	3450
≤ 3000	L	4125
≤ 3275	XL	4375
≤ 4750	5500	5725
≤ 6500	7000	7225

The distance back (overall length of operator) can be shortened on site up to LZ + 1100 mm.

The side guide can be set back up to 125 mm if the distance back (overall length of operator) is smaller than LZ + 1100 mm.

Explanations

RM	Grid height (ordering size)
LZ	Clear frame dimension (ordering size)
LDH	Clear passage height
LDB	Clear passage width
ET	Distance back (overall length with operator)
OFF	Finished floor level
ASS	Closing side sideroom
AKS	Curve side sideroom

For further information, please see the fitting data or contact your Hörmann partner.

Experience Hörmann quality in new construction and modernisation

Hörmann provides an excellent basis for comprehensive planning. Carefully matched solutions offer you the very best in perfectly designed products for every area.

**GARAGE DOORS. GATE AND DOOR OPERATORS. ENTRANCE DOORS.
RESIDENTIAL INTERNAL DOORS. STEEL DOORS. FRAMES.**



Some of the doors shown are equipped with special equipment and do not always correspond to the standard versions. The surface finishes and colours shown are subject to the limitations of the printing process and cannot be regarded as binding. All rights reserved. No part may be reproduced without our prior permission. Subject to changes.